

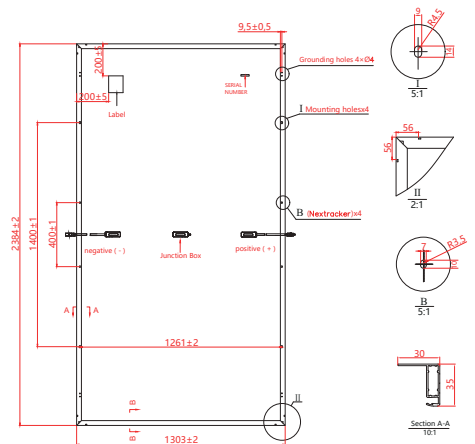
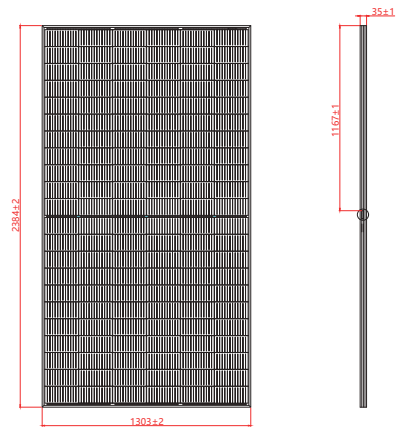


SKYLAND ENERGY

Electrical Characteristics

| Module Type | SKY-655M/210 | | SKY-660M/210 | | SKY-665M/210 | | SKY-670M/210 | |
|-----------------------------|--------------|-------|--------------|-------|--------------|-------|--------------|-------|
| | STC | NOCT | STC | NOCT | STC | NOCT | STC | NOCT |
| Maximum Power at STC (Pmp) | 655 | 492 | 660 | 496 | 665 | 500 | 670 | 504 |
| Open Circuit Voltage (Voc) | 43.7 | 40.8 | 43.9 | 41.0 | 44.1 | 41.19 | 44.3 | 41.38 |
| Short Circuit Current (Isc) | 19.09 | 15.43 | 19.14 | 15.47 | 19.19 | 15.51 | 19.24 | 15.55 |
| Maximum Power Voltage (Vmp) | 36.62 | 33.59 | 36.82 | 33.81 | 37.02 | 33.98 | 37.22 | 34.15 |
| Maximum Power Current (Imp) | 17.89 | 14.65 | 17.93 | 14.69 | 17.97 | 14.72 | 18.01 | 14.76 |
| Module Efficiency at STC(%) | 21.09 | | 21.25 | | 21.41 | | 21.57 | |
| Power Tolerance | (0, +4.99W) | | | | | | | |
| Maximum System Voltage | 1500V DC | | | | | | | |
| Maximum Series Fuse Rating | 30 A | | | | | | | |

STC: Irradiance 1000 W/m², module temperature 25°C, AM=1.5
Power measurement tolerance: +/-3%



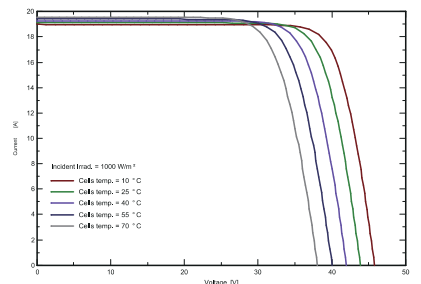
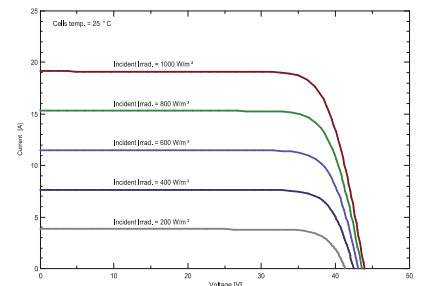
Temperature Characteristics

| | |
|--|--------------|
| Pmax Temperature Coefficient | -0.34 %/°C |
| Voc Temperature Coefficient | -0.26 %/°C |
| Isc Temperature Coefficient | +0.05 %/°C |
| Operating Temperature | -40 ~ +85 °C |
| Nominal Operating Cell Temperature(NOCT) | 45±2 °C |

Mechanical Specifications

| | |
|---------------------|---|
| External Dimensions | 2384 x 1303 x 35 mm |
| Weight | 34.0 kg |
| Solar Cells | PERC Mono (132 pcs) |
| Front Glass | 3.2mm AR coating tempered glass, low iron |
| Frame | Anodized aluminium alloy |
| Junction Box | IP68, 3 diodes |
| Output Cables | 4.0mm ² , 250mm(+)/350mm(-) or Customized Length |
| Mechanical Load | Front side 5400Pa/ Rear side 2400Pa |

I-V Curve



Packing Configuration

| | 2384x1303x35mm |
|-----------------------|----------------|
| Container | 40'HQ |
| Pieces per Pallet | 31 |
| Pallets per Container | 17 |
| Pieces per Container | 527 |

Specifications are subject to change without further notification

SKYLAND GROUP S.R.L

Add: Via Vincenzo Capelli 2, Milano 20124